



PS-3-1000F Three-way Power Divider/Combiner 10-1000 MHz



DESCRIPTION

The PS-3 series of power dividers are true three-way power dividers as opposed to four-way dividers with one port terminated. Signal fed to the common port is divided equally between the three ports. Three signals fed to the output ports will add vectorially at the common port. Flatpack and SMA connector equipped models are available.

GUARANTEED MINIMUM PERFORMANCE DATA

Isolation dB	17
- 1 dB Bandwidth, MHz	10-1000
Midband insertion loss dB	.50
Amplitude unbalance dB	.4
Phase unbalance°	5
VSWR	1.75

ABSOLUTE MAXIMUM RATINGS:

Input power 1 W
Temperature Range - 54°C to + 100°C

ENVIRONMENTAL CONDITIONS

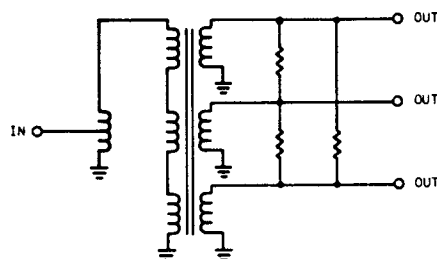
GUARANTEED ENVIRONMENTAL PERFORMANCE:

All units are designed to meet their specifications over - 54°C to + 100°C after exposure to any or all of the following tests per MIL-STD-202E.

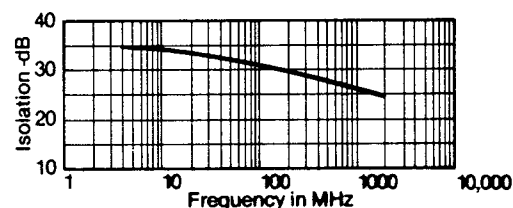
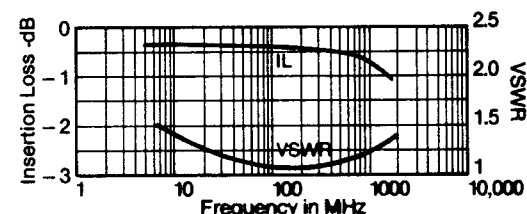
Exposure	Method	Test Condition
Thermal Shock	107D	B
Altitude	105C	G
H.F. Vibration	204C	D
Mechanical Shock	213B	C
Random Vibration	214	IIF
(15 minutes per axis)		
Solderability	208C	
Terminal Strength	211A	C
Resistance to Soldering Heat	210A	B

Sealed units, meet the requirements of Method 106D of MIL-STD-202E when exposed to humidity.

FUNCTIONAL SCHEMATIC



TYPICAL PERFORMANCE



PACKAGE

CASE MATERIAL:

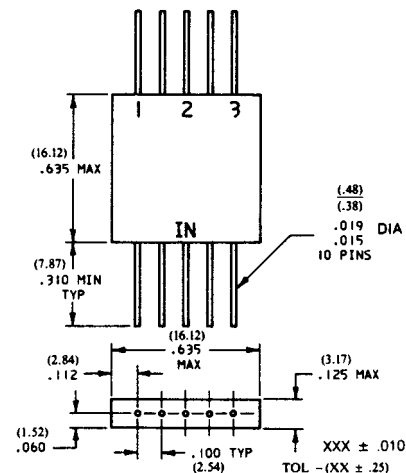
F15 Kovar per ASTM Std. F-15-68, (Chemical composition per MIL-STD-1276, Type K)

FINISH:

Plating, all metal parts: gold per MIL-G-45204, Type I, Grade A, Class 1, over nickel per MIL-C-26074, Class 1

LEADS:

Kovar per MIL-STD-1276, Type K



Specifications subject to change without notice.

8.10.04 Rev. A